



A Furukawa Company

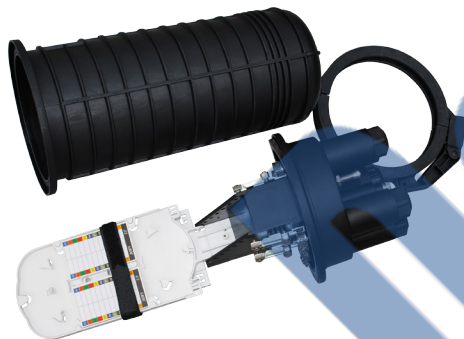
## Fiber Optic Splice Closure



*Assembled Closure*

### Features

- Maintains bend radius for G.652D fibers
- Small size with six cable ports 14 mm and an additional smaller port
- Concentric rubber sealing grommets simplify installation and re-entry
- Aerial, pole-mounting, direct buried and handheld applications
- High reliability
- Compact package
- RoHS compliant; free from heavy metals and environmentally friendly



*Closure Base Components*

### Product Description

The new family of angled LC & SC adapters from OFS allows users to decrease the amount of space required in front of the faceplate. The OFS Fiber Optic Splice Closure is the perfect product for splicing cable. The Outside Plant (OSP) Closure can handle preterminated cables, single fusion and mass fusion splicing, either 1X8, 1X16 or 1X32 splitters and direct termination. There is splice capacity for 144 single fusion splices. Optional accessories includes grounding hardware, splitter trays, SC connector tray and aerial mounting hardware. The splitter tray is the same size as the splice tray and has one section to add the ruggedized splitter and one 12 fiber splice holder. The adapter tray would replace one of the splice trays. The base closure comes with one tray and grommets for cable OD 10-25 mm. The 5 additional trays and drop grommets are ordered separately. When used with angled connector boots, jumpers drape closely to the faceplate, allowing easier door closure without damage to the jumper.



A Furukawa Company

Closure Specifications

Characteristic	Specification
Product Code:	CLOSURE,GPJ09-(FK-CEO-4M)-144-W/ SPL TRAY
Comcode:	301098570
Weight:	4.5 kg (9.9 lb)
Dimensions:	23.0 cm X 43.5 cm

Accessory Ordering Information:

Product Code	Comcode	Description
CLOSURE,GPJ09-#7 SPL TRAY-24FBR SNGL FSN	301098588	#7 Single Fusion splice tray that is purchased separately and used with the GPJ09 closure which only comes with one single fusion splice tray
CLOSURE,GPJ09-(FK-CEO-4M)-4PORT 7MM GROM		4-hole 7 mm grommet that is purchased separately and used with the GPJ09 closure which comes with grommets for larger cables. This grommet is used for drop cables.
CLOSURE,GPJ09-(FK-CEO-4M)-4PORT 9MM GROM		4-hole 9 mm grommet that is purchased separately and used with the GPJ09 closure which comes with grommets for larger cables. This grommet is used for smaller OD cables.

Splice Tray (24 single fusion splice tray and 12 ribbon splice tray)

Characteristic	Specification	
Max Splices "end to end" Loose Tube:	144 splices	144 fibers
Max Splices "end to end" Ribbon:	72 splices	864 fibers
Tray Capacity:	24 single	12 mass
Max Drops:	8	

Splitter (Splitter tray takes the place of one splice tray)

Ruggedized Splitter: 1

Note: The splitter tray contains a splitter position that handles two splitters and one 12 fiber splice holder position.

Connector Panel (Connector Tray takes the place of one splice tray)

Max Drops: 8

For additional information please contact your sales representative. You can also visit our website at www.ofsoptics.com or call 1-888-fiberhelp (1-888-342-3743) USA or 1-770-798-5555 outside the USA.



Copyright © 2016 OFS Fitel, LLC. All rights reserved, printed in USA.

OFS Marketing Communications  
DOC: fap-279 Date: 09/16



OFS reserves the right to make changes to the prices and product(s) described in this document at any time without notice. This document is for informational purposes only and is not intended to modify or supplement any OFS warranties or specifications relating to any of its products or services.